

What can today's rate
do for your payment?



2271-C Plan

- New 2,285 ft. two-story home in The Villas @ Fossil Creek
- Keller Independent School District
- Inviting porches allow for golf course views
- Unbeatable location to live, work, and play
- Open floor plan makes it perfect for entertaining
- Private sitting area off master suite

Take advantage of this fantastic opportunity to own a new home in one of the hottest areas in Fort Worth!

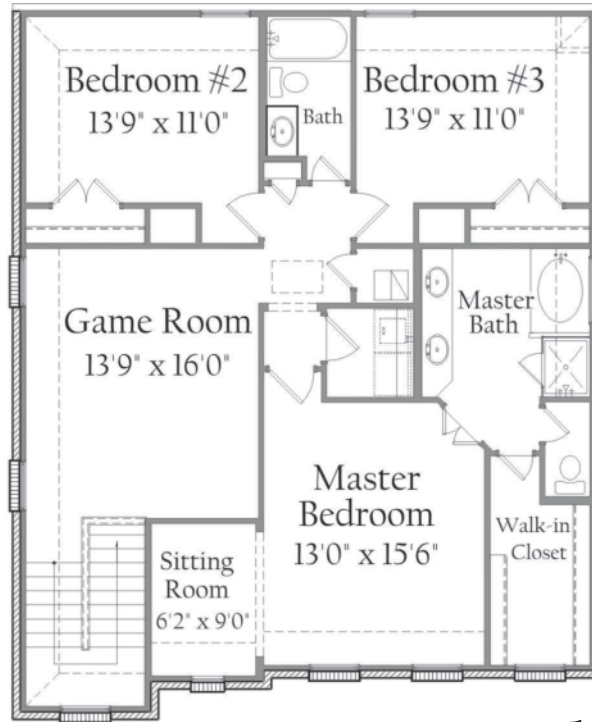
Call 817.737.0101 today to make this smart move



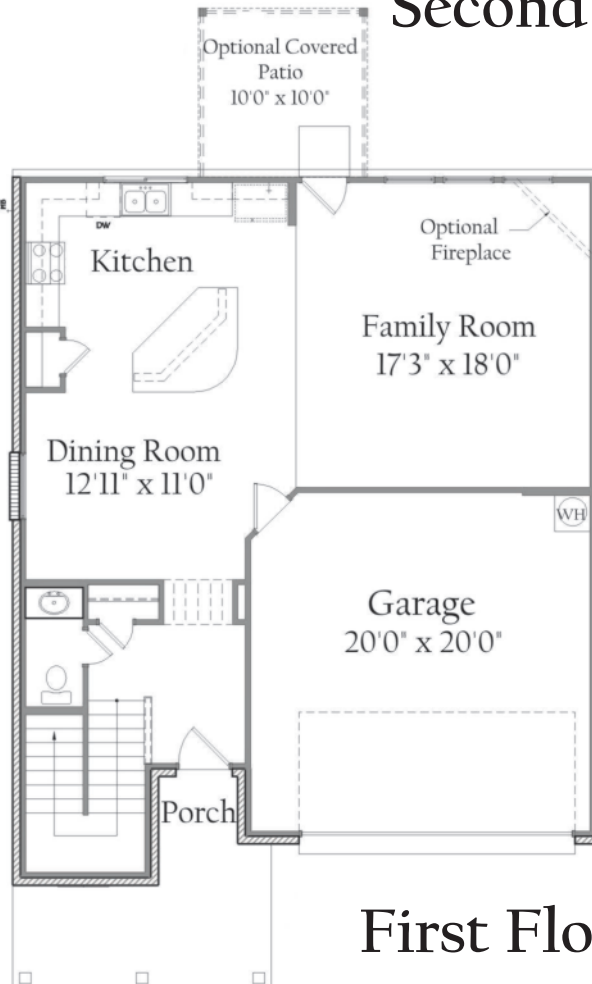
HD HOMES

www.hdhometexas.com

2271-C Plan



Second Floor Plan



Optional Fireplace

First Floor Plan

Square Footage Totals	
First Floor	949 ft.
Second Floor	1,336 ft.
Total A/C Living	2,285 ft.
Covered Porch	127 ft.
Garage	433 ft.
Total Under Roof	2,845 ft.



HD HOMES

All plans and elevations are subject to change without prior notice. All HD Homes floorplans & elevations are copyrighted. HD Homes will enforce copyright laws to their fullest extent. All plan numbers are approximations of square footage and may vary with alternate elevations.

