



# The Palmer 1611- C Plan

- New 1,627 ft. **SINGLE STORY** home
- Perfectly located in The Villas @ Fossil Creek
- Keller Independent School District
- Golf course views from master suite
- Unbeatable location to live, work, and play
- Open floor plan makes it perfect for entertaining
- Two closets in master suite

Take advantage of this fantastic opportunity to own a single-story home on in The Villas @ Fossil Creek

Call 817.737.0101 today to make this smart move



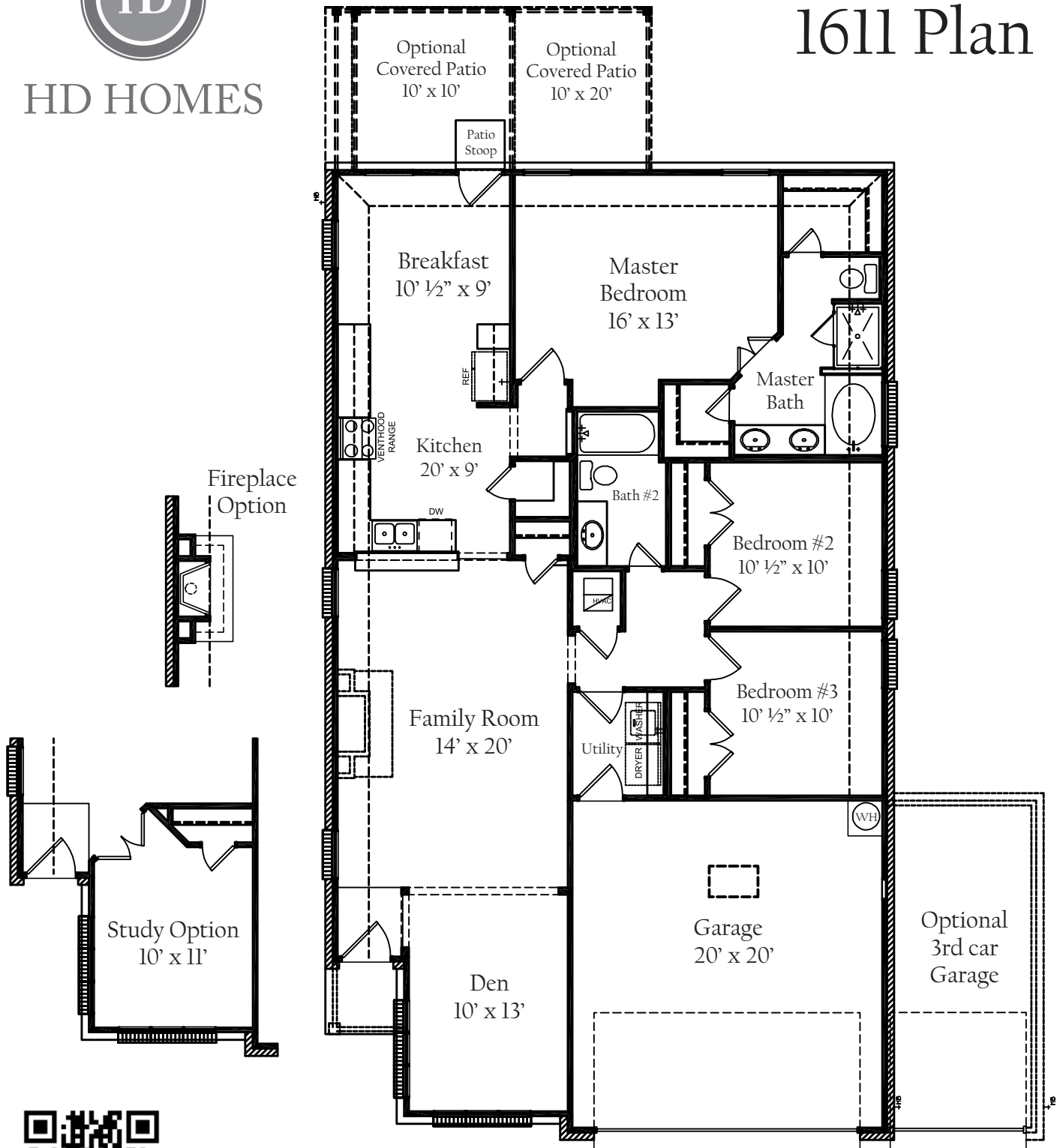
HD HOMES

[www.hdhometexas.com](http://www.hdhometexas.com)



HD HOMES

# The Palmer 1611 Plan



## First Floor Plan

Width of home 35 ft.  
Depth of home 60 ft.

### Square Footage Totals

1st Floor	1,627 ft.
Porch	18 ft.
Garage	412 ft.

**Total Under Roof 2,057 ft**

Opt. Patio #1	100 ft.
Opt. Patio #2	200 ft.
Opt. 3rd Garage	195 ft.



All plans and elevations are subject to change without prior notice. All HD Homes floor plans and elevations are copyrighted. HD Homes will enforce copyright laws to their fullest extent. All plan numbers are approximations of square footage and may vary with alternate elevations

Please note: in an effort to continually improve our plans and elevations, HD Homes reserves the right to make alterations to the designs without prior notice

