

What can today's rate
do for your payment?



1466-B Plan

- New 1,482 ft. single-story home in The Villas @ Fossil Creek
- Keller Independent School District
- Unbeatable location to live, work, and play
- Open floor plan makes it perfect for entertaining
- Optional 2nd floor for 3rd bedroom and gameroom
- Spectacular views of golf course

Take advantage of this fantastic opportunity to own a new home in one of the hottest areas in Fort Worth!

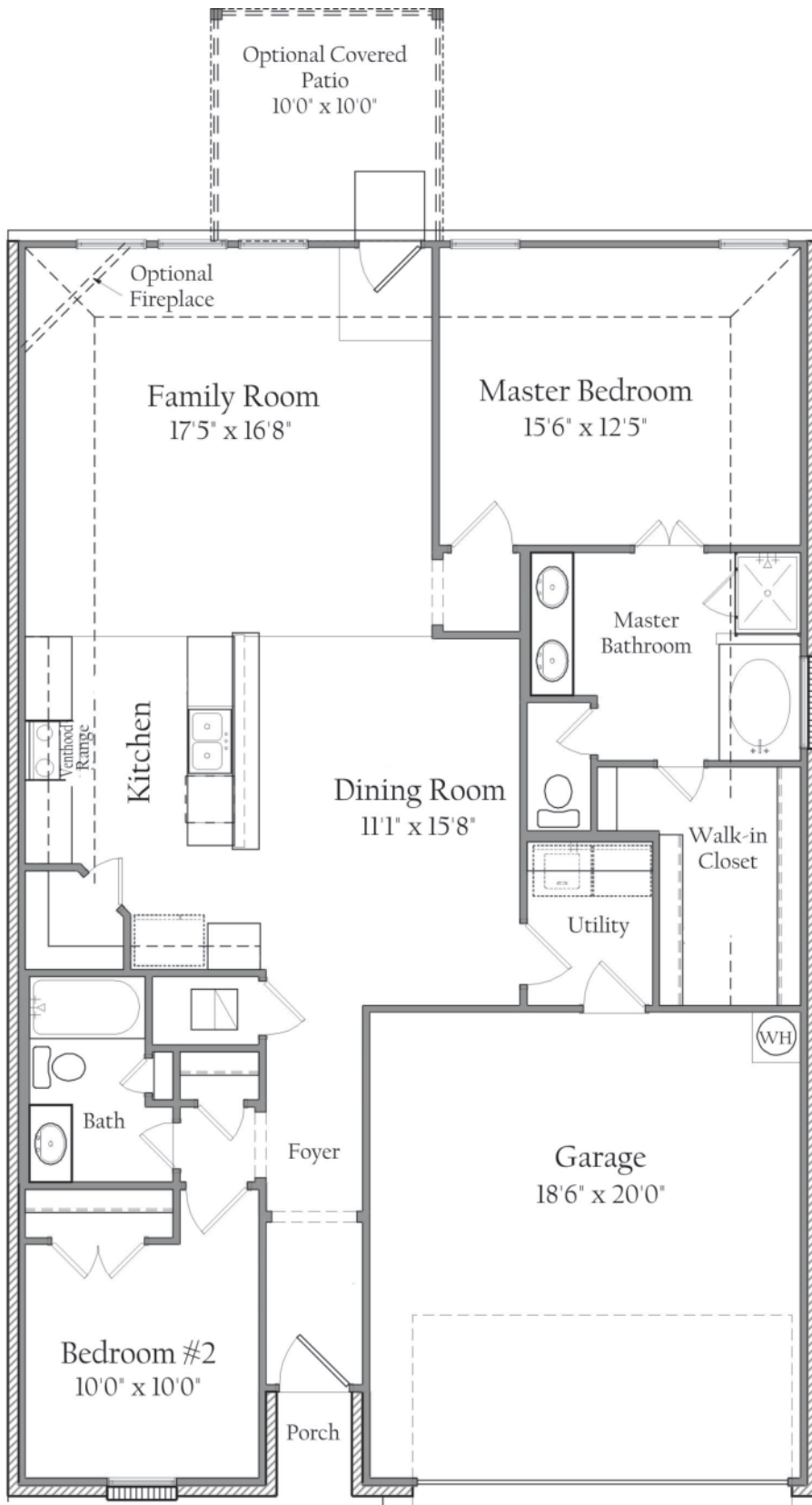
Call 817.737.0101 today to make this smart move



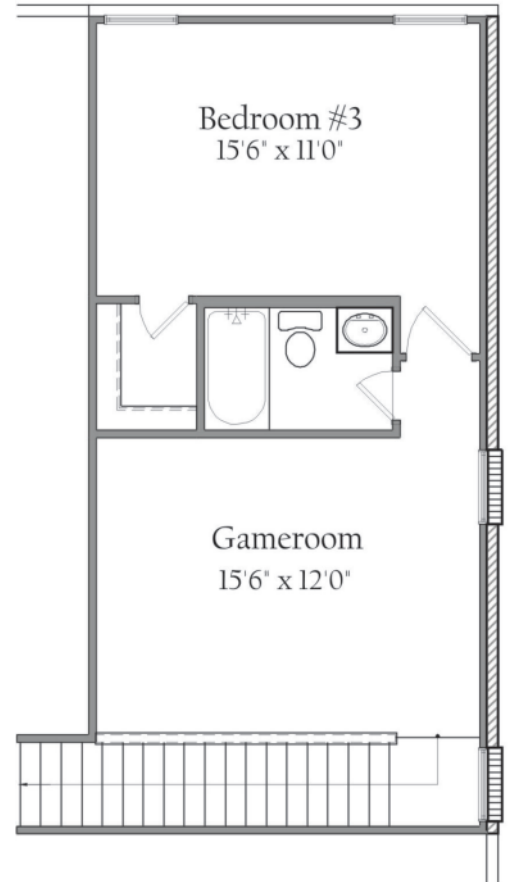
HD HOMES

www.hdhometexas.com

1466 Plan



First Floor Plan



Optional Second Floor

Square Footage Totals	
First Floor	1,466 ft.
Covered Porch	18 ft.
Garage	406 ft.
Total Under Roof	1,890 ft.
2nd Floor	490 ft.



HD HOMES

All plans and elevations are subject to change without prior notice. All HD Homes floorplans & elevations are copyrighted. HD Homes will enforce copyright laws to their fullest extent. All plan numbers are approximations of square footage and may vary with alternate elevations.

