



3921 Hanna Rose Lane \$152,439

- New 1,791 ft. single-story home in Big Bear Creek
- Keller Independent School District
- Unbeatable location to live, work, and play
- Open floor plan makes it perfect for entertaining
- Quick commute to downtown Fort Worth and DFW
- Ready for move-in

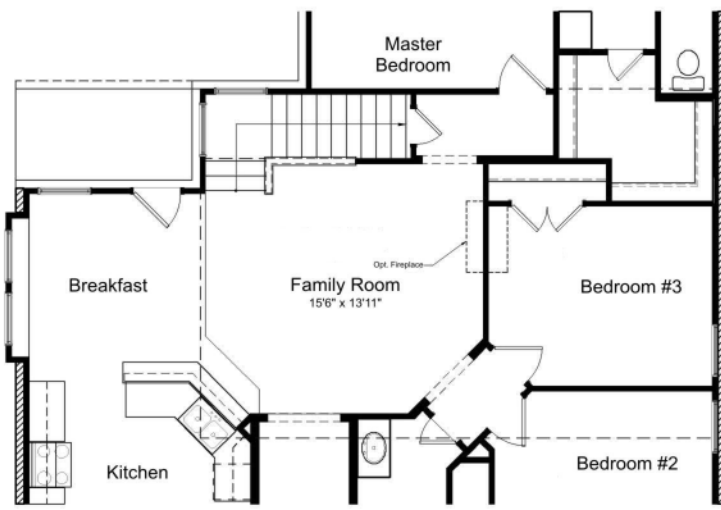
Take advantage of this fantastic opportunity to own a new home in one of the hottest areas in Fort Worth!

Call 817.737.0101 today to make this smart move

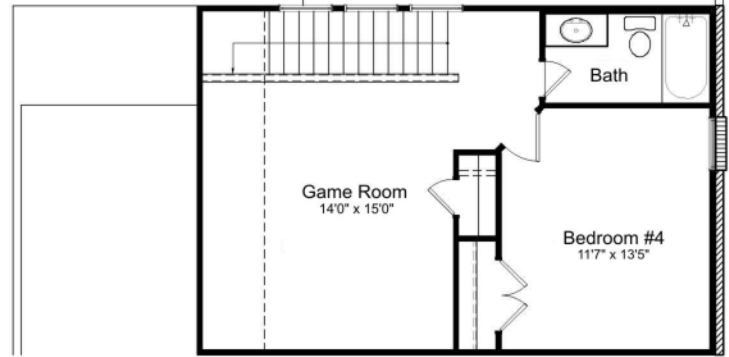


HD HOMES

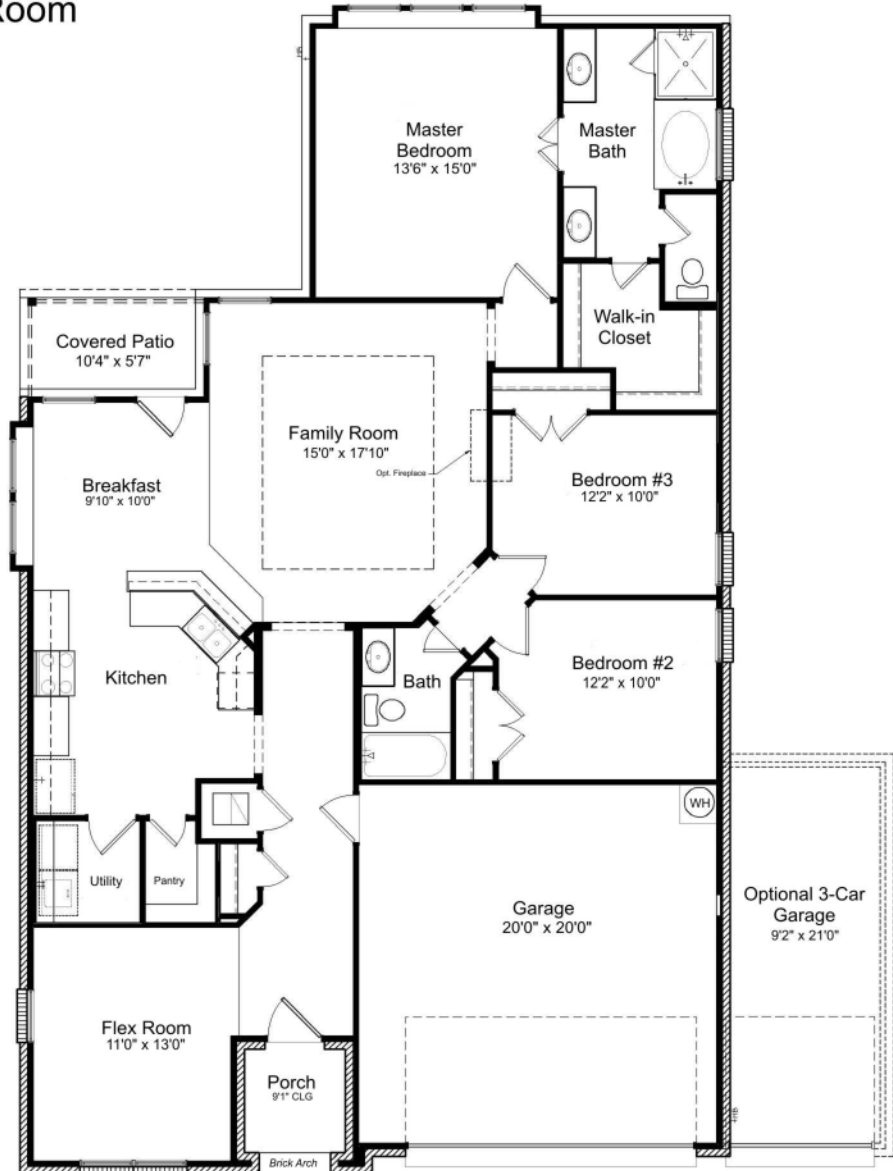
www.hdhometexas.com



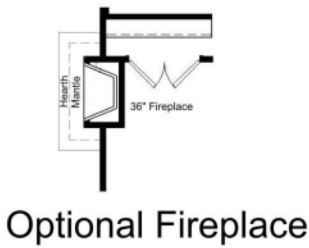
Optional Game Room



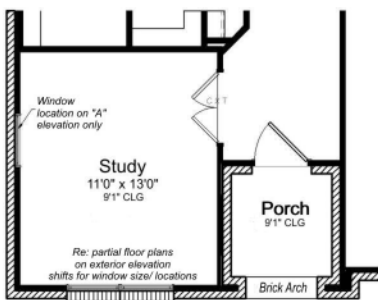
Optional Game Room



1st Floor Plan



Optional Fireplace



Optional Study



HD HOMES

All plans and elevations are subject to change without prior notice. All HD Homes floor plans and elevations are copyrighted. HD Homes will enforce copyright laws to their fullest extent. All plan numbers are approximations of square footage and may vary with alternate elevations.

Square Footage Totals	
First Floor	1,763 ft.
Covered Porches	99 ft.
Garage	439 ft.
Total Under Roof	2,301 ft.
Optional 2nd Floor	523 ft.
Optional 3rd Garage	207 ft.

Please note: In an effort to continually improve our floor plans and elevations, HD Homes reserves the right to make alterations to the designs without prior notice

